

Memorandum

To: Programs, Projects and Operations Subcommittee

Subject: Elkhorn River Emergency Watershed Protection Project

Date: July 6, 2010

From: Gerry Bowen

Recent flooding along the Elkhorn River (see attached) has resulted in severe bank erosion in Sarpy County near the Douglas County line. The streambank has moved upwards of 300 feet in places and threatened three residences in the area (Dave Gilmore, Aaron Graham, and Chris Kelsay).

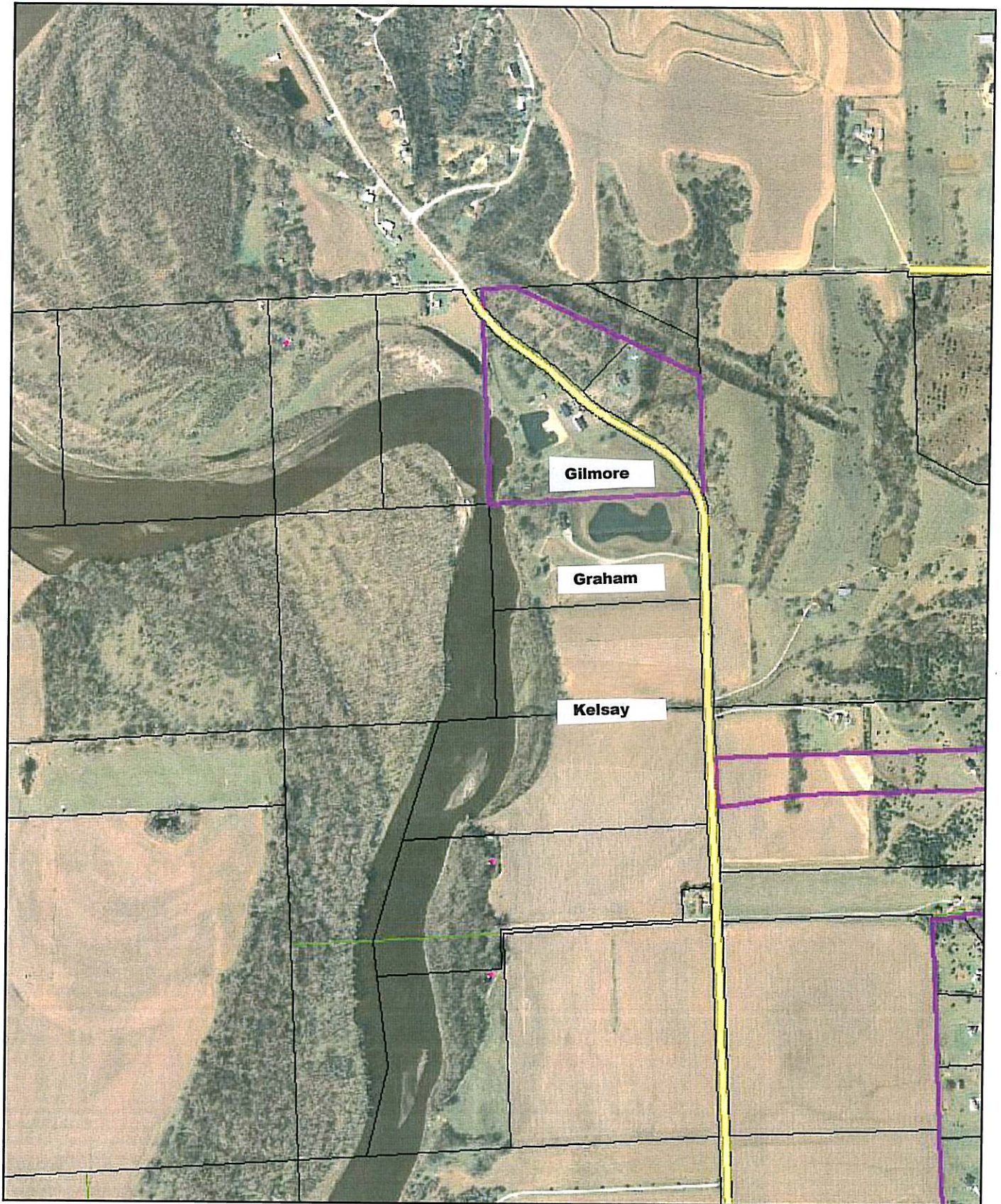
The Natural Resources Conservation Service (NRCS) has reviewed the area and the possibility exists that the project may be eligible for Emergency Watershed Protection (EWP) funding through NRCS. EWP requires a local sponsor and pays up to 75% of project costs, including engineering. The local sponsor may need to provide the engineering services through a consultant. Although, a detailed cost estimate is not yet available, it is anticipated that repairs would cost about \$500,000, with the local match approximately \$125,000, some of which could be in-kind services.

The District was also the sponsor of a similar project at this location in 1993. The recent streambank erosion has flanked some of those protection measures. Easements acquired in 1993 still apply, although some of the easement areas will need to be expanded due to the erosion.

It is proposed that the District sponsor this emergency project and provide the local matching funds. It is further proposed that the General Manager be authorized to retain a consultant for this emergency work, if necessary.

- **It is recommended that the Subcommittee recommend to the Board that the General Manager be authorized to provide necessary professional engineering services and execute a local sponsorship agreement with the Natural Resources Conservation Service for an Emergency Watershed Protection Project on the Elkhorn River near the Douglas-Sarpy County line, subject to changes deemed necessary by the General Manager, and approved as to form by District Legal Counsel.**

Sarpy County, Nebraska



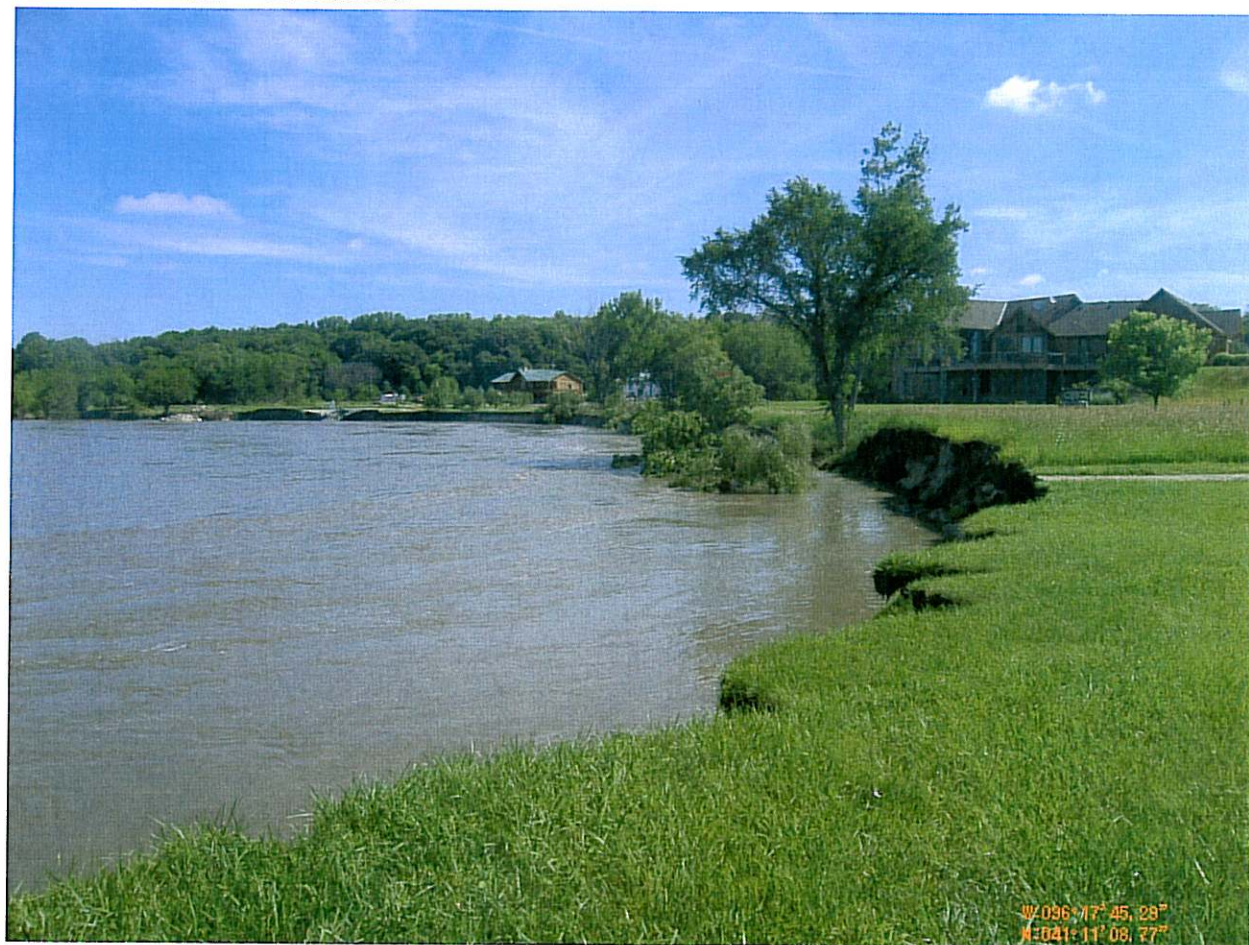
Disclaimer: This data is for informational purposes only, and should not be substituted for a true titles search, property appraisal, survey, or for zoning district verification. Sarpy County and the Sarpy County GIS Coalition assume no legal responsibility for the information contained in this data.

Map Scale
1 inch = 804 feet

7/6/2010



GPS-Photo Link: 01 Graham -



GPS-Photo Link: 02 Graham -



GPS-Photo Link: 03 Graham -



GPS-Photo Link: 04 Graham -



GPS-Photo Link: 05 Graham -



GPS-Photo Link: 06 Graham -



GPS-Photo Link: 07 Graham -



GPS-Photo Link: 08 Graham -



GPS-Photo Link: 09 Graham -





GPS-Photo Link: 01 Elkhorn -



GPS-Photo Link: 02 Elkhorn -



GPS-Photo Link: 03 Elkhorn -

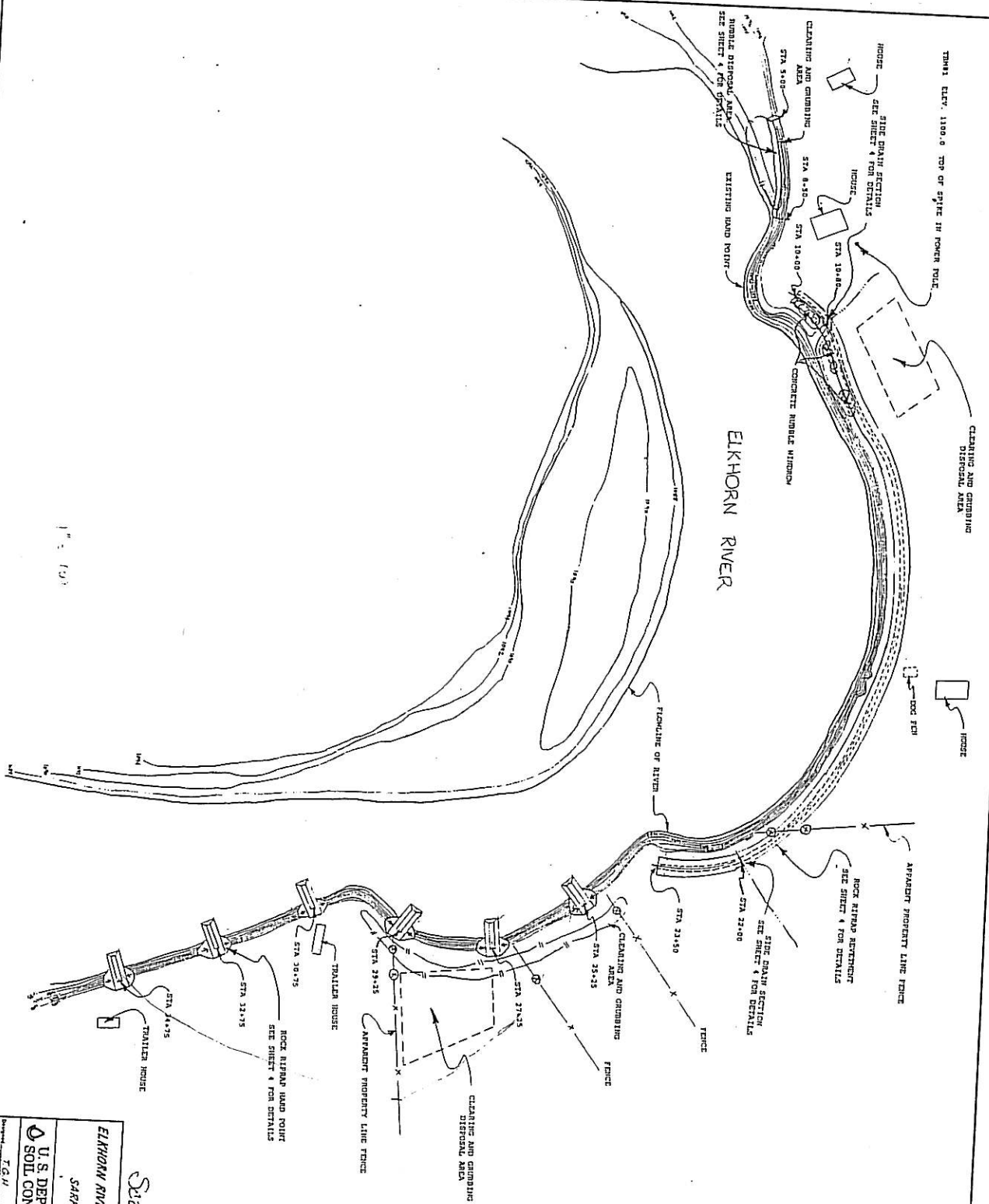


GPS-Photo Link: 04 Elkhorn -



GPS-Photo Link: 05 Elkhorn -

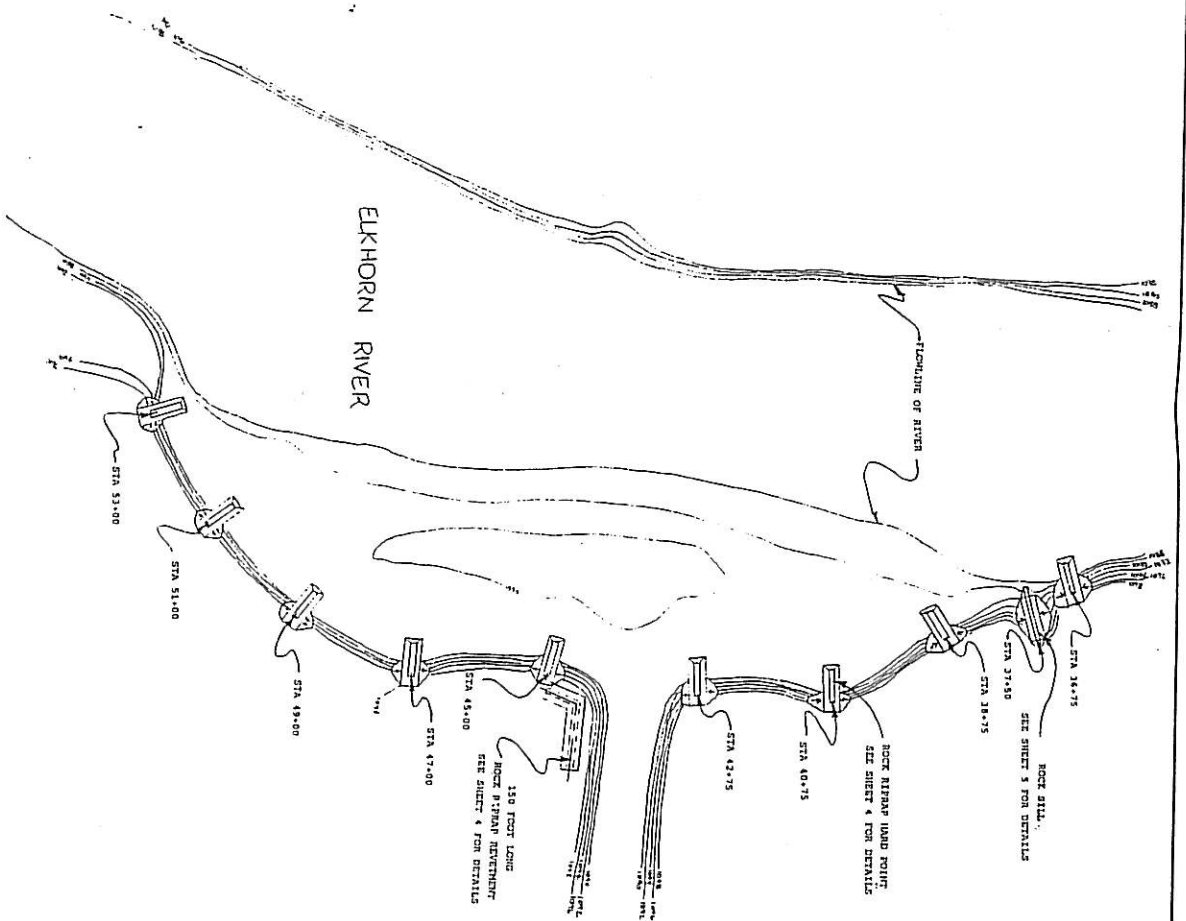




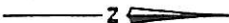
Scale 1" = 100'



ELKHORN RIVER STEAMBAK STABILIZATION	
SARPY COUNTY, NEBRASKA	
U. S. DEPARTMENT OF AGRICULTURE	
SOIL CONSERVATION SERVICE	
Designed by	T.C.H.
Drawn by	T.C.H.
Checked by	P.C.S.
Date	11/31
Sheet	1 of 1
Project No.	ELP-7



Scale 1" = 100'



ELKHORN RIVER STABILIZATION	
SARPY COUNTY, NEBRASKA	
U.S. DEPARTMENT OF AGRICULTURE SOIL CONSERVATION SERVICE	
Designed by T.G.H.	Checked by H.C.S.
Date 11-93	Scale 1" = 100'
Sheet 3	Project EMP-7